

MASTER KEY MAP

TO SHOW CONDITIONS AS OF 12-31-2014

MASTER KEY MAP TOWNSHIP OF BARNEGAT

OCEAN COUNTY NEW JERSEY

SCALE: 1" = 2500' DATE: 7-30-2003

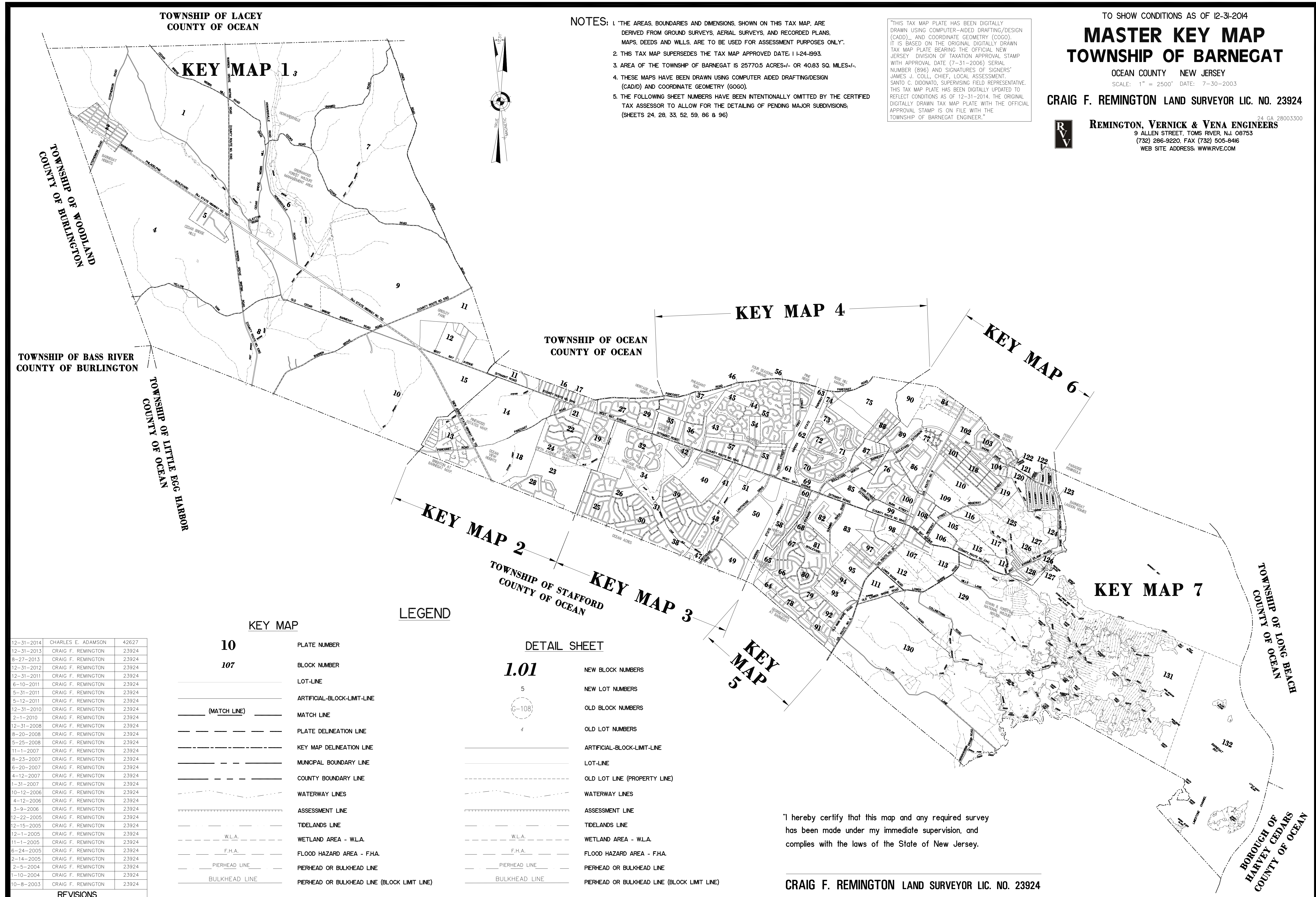
CRAIG F. REMINGTON LAND SURVEYOR LIC. NO. 23924



REMINGTON, VERNICK & VENA ENGINEERS
24 GA 28003300
9 ALLEN STREET, TOMS RIVER, N.J. 08753
(732) 286-9220, FAX (732) 505-8416
WEB SITE ADDRESS: WWW.RVE.COM

- NOTES: 1. THE AREAS, BOUNDARIES AND DIMENSIONS, SHOWN ON THIS TAX MAP, ARE DERIVED FROM GROUND SURVEYS, AERIAL SURVEYS, AND RECORDED PLANS, MAPS, DEEDS AND WILLS. ARE TO BE USED FOR ASSESSMENT PURPOSES ONLY.
2. THIS TAX MAP SUPERSEDES THE TAX MAP APPROVED DATE: 11-24-1993.
3. AREA OF THE TOWNSHIP OF BARNEGAT IS 25770.5 ACRES +/- OR 40.83 SQ. MILES +/-.
4. THESE MAPS HAVE BEEN DRAWN USING COMPUTER AIDED DRAFTING/DESIGN (CAD/D) AND COORDINATE GEOMETRY (GOCO).
5. THE FOLLOWING SHEET NUMBERS HAVE BEEN INTENTIONALLY OMITTED BY THE CERTIFIED TAX ASSESSOR TO ALLOW FOR THE DETAILING OF PENDING MAJOR SUBDIVISIONS: (SHEETS 24, 28, 33, 52, 59, 86 & 96)

"THIS TAX MAP PLATE HAS BEEN DIGITALLY DRAWN USING COMPUTER-AIDED DRAFTING/DESIGN (CAD/D) AND COORDINATE GEOMETRY (GOCO). IT IS BASED ON THE ORIGINAL DIGITALLY DRAWN TAX MAP PLATE BEARING THE OFFICIAL NEW JERSEY DIVISION OF TAXATION APPROVAL STAMP WITH APPROVAL DATE (7-31-2006) SERIAL NUMBER (896) AND SIGNATURES OF SIGNERS: JAMES J. COLL, CHIEF, LOCAL ASSESSMENT; SANTO C. DIDONATO, SUPERVISING FIELD REPRESENTATIVE. THIS TAX MAP PLATE HAS BEEN DIGITALLY UPDATED TO REFLECT CONDITIONS AS OF 12-31-2014. THE ORIGINAL DIGITALLY DRAWN TAX MAP PLATE WITH THE OFFICIAL APPROVAL STAMP IS ON FILE WITH THE TOWNSHIP OF BARNEGAT ENGINEER."



REVISIONS	DATE	BY	DESCRIPTION
12-31-2014	CHARLES E. ADAMSON	42627	
12-31-2013	CRAIG F. REMINGTON	23924	
8-27-2013	CRAIG F. REMINGTON	23924	
12-31-2012	CRAIG F. REMINGTON	23924	
12-31-2011	CRAIG F. REMINGTON	23924	
8-10-2011	CRAIG F. REMINGTON	23924	
5-31-2011	CRAIG F. REMINGTON	23924	
5-12-2011	CRAIG F. REMINGTON	23924	
12-31-2010	CRAIG F. REMINGTON	23924	
2-1-2010	CRAIG F. REMINGTON	23924	
12-31-2008	CRAIG F. REMINGTON	23924	
8-20-2008	CRAIG F. REMINGTON	23924	
5-25-2008	CRAIG F. REMINGTON	23924	
11-1-2007	CRAIG F. REMINGTON	23924	
8-23-2007	CRAIG F. REMINGTON	23924	
6-20-2007	CRAIG F. REMINGTON	23924	
4-12-2007	CRAIG F. REMINGTON	23924	
1-31-2007	CRAIG F. REMINGTON	23924	
10-12-2006	CRAIG F. REMINGTON	23924	
4-12-2006	CRAIG F. REMINGTON	23924	
3-9-2006	CRAIG F. REMINGTON	23924	
12-22-2005	CRAIG F. REMINGTON	23924	
12-15-2005	CRAIG F. REMINGTON	23924	
12-1-2005	CRAIG F. REMINGTON	23924	
11-1-2005	CRAIG F. REMINGTON	23924	
6-24-2005	CRAIG F. REMINGTON	23924	
2-14-2005	CRAIG F. REMINGTON	23924	
2-5-2004	CRAIG F. REMINGTON	23924	
1-10-2004	CRAIG F. REMINGTON	23924	
10-8-2003	CRAIG F. REMINGTON	23924	

KEY MAP	LEGEND
10	PLATE NUMBER
107	BLOCK NUMBER
(MATCH LINE)	MATCH LINE
	LOT-LINE
	ARTIFICIAL-BLOCK-LIMIT-LINE
	PLATE DELINEATION LINE
	KEY MAP DELINEATION LINE
	MUNICIPAL BOUNDARY LINE
	COUNTY BOUNDARY LINE
	WATERWAY LINES
	ASSESSMENT LINE
	TIDELANDS LINE
W.L.A.	WETLAND AREA - W.L.A.
F.H.A.	FLOOD HAZARD AREA - F.H.A.
PIERHEAD LINE	PIERHEAD OR BULKHEAD LINE
BULKHEAD LINE	PIERHEAD OR BULKHEAD LINE (BLOCK LIMIT LINE)

DETAIL SHEET	
1.01	
5	
G-108	
4	
	NEW BLOCK NUMBERS
	NEW LOT NUMBERS
	OLD BLOCK NUMBERS
	OLD LOT NUMBERS
	ARTIFICIAL-BLOCK-LIMIT-LINE
	LOT-LINE
	OLD LOT LINE (PROPERTY LINE)
	WATERWAY LINES
	ASSESSMENT LINE
	TIDELANDS LINE
W.L.A.	WETLAND AREA - W.L.A.
F.H.A.	FLOOD HAZARD AREA - F.H.A.
PIERHEAD LINE	PIERHEAD OR BULKHEAD LINE
BULKHEAD LINE	PIERHEAD OR BULKHEAD LINE (BLOCK LIMIT LINE)

"I hereby certify that this map and any required survey has been made under my immediate supervision, and complies with the laws of the State of New Jersey.

CRAIG F. REMINGTON LAND SURVEYOR LIC. NO. 23924

MASTER KEY MAP